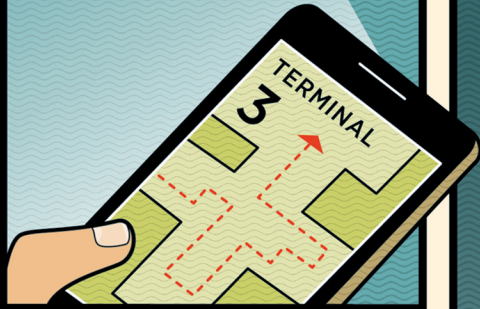


Avoiding Airport Frustrations

Sarah McKeon '04, general manager of New Jersey Airports at The Port Authority of New York and New Jersey, shares tips to help you navigate security and get to your gate with time to spare.



AIRPORT INFRASTRUCTURE IS EVER-CHANGING. REVIEW FACILITY MAPS ONLINE TO LOCATE YOUR GATE AND PLAN CONNECTIONS IN ADVANCE.



STARTING ON MAY 7, 2025, YOU'LL NEED EITHER A REAL ID OR PASSPORT TO TRAVEL DOMESTICALLY. CHECK IN WITH YOUR STATE ON HOW TO GET ONE.

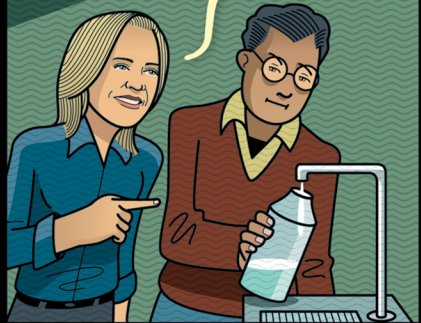
IF YOU FLY MORE THAN TWICE A YEAR, CONSIDER APPLYING FOR GLOBAL ENTRY. THE TRUSTED TRAVELER PROGRAM WILL EXPEDITE YOUR SECURITY EXPERIENCE BOTH AT HOME AND ABROAD.

WEAR A TSA-FRIENDLY OUTFIT – THINK SLIP-ON SHOES AND MINIMAL LAYERS. AND PACK YOUR BELT INSTEAD OF WEARING IT.



REMEMBER, NO LIQUIDS LARGER THAN 3 OZ. ARE ALLOWED THROUGH SECURITY.

BRING A REUSABLE WATER BOTTLE – MOST AIRPORTS HAVE REFILLING STATIONS.



GATE 17



THIS LINE HAS ME IN SUCH A FOWL MOOD!

DURING PEAK TRAVEL TIMES, PACK YOUR PATIENCE – AND REMEMBER THAT AIRPORT EMPLOYEES ARE DOING THEIR BEST TO GET YOU WHERE YOU'RE GOING!

