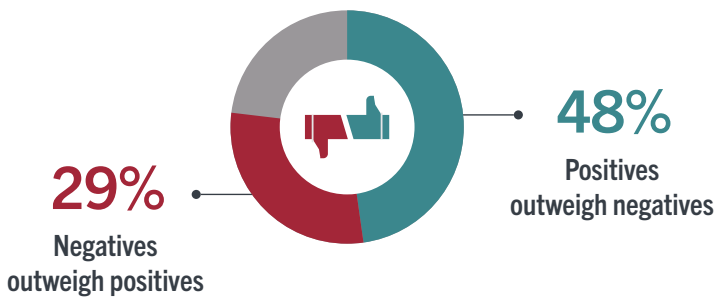


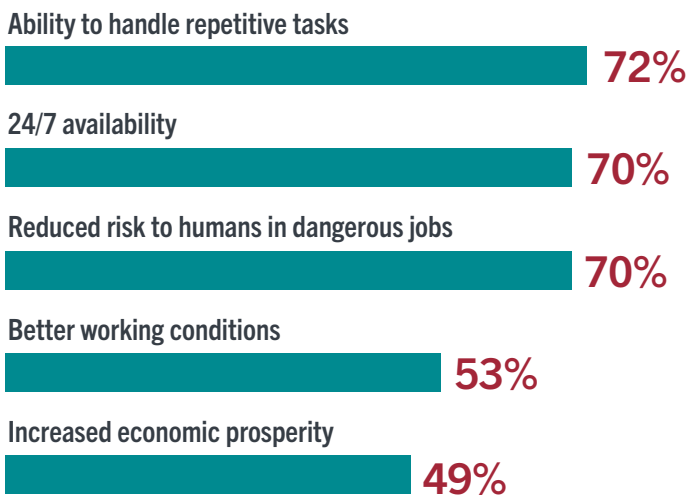
Despite Concerns that Artificial Intelligence Is a Threat to Democracy and Will Likely Become Uncontrollable, Americans Believe its Benefits Still Outweigh its Risks

That's according to findings from the Stevens *TechPulse Report: A Perspective on Americans' Attitudes Toward Artificial Intelligence*. The Stevens Institute of Technology/Morning Consult Poll shows the public is deeply conflicted about the promise and pitfalls of AI.

More Americans feel the positives of greater AI adoption in everyday life outweigh the negatives, but still express widespread concerns over the consequences of greater adoption of AI:

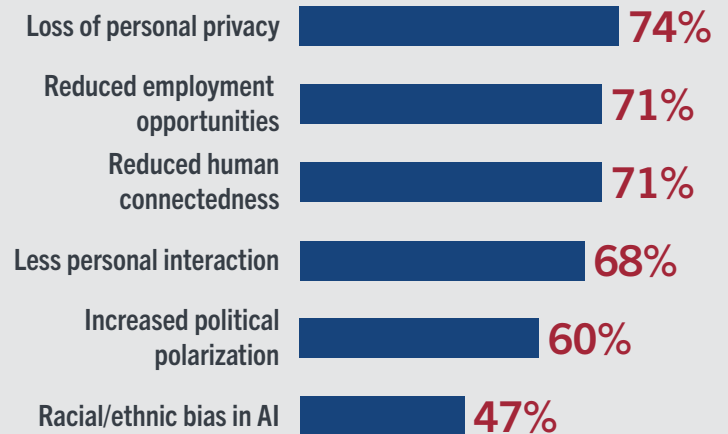


Americans recognize the likely potential positive outcomes of greater adoption of AI in everyday life, including:

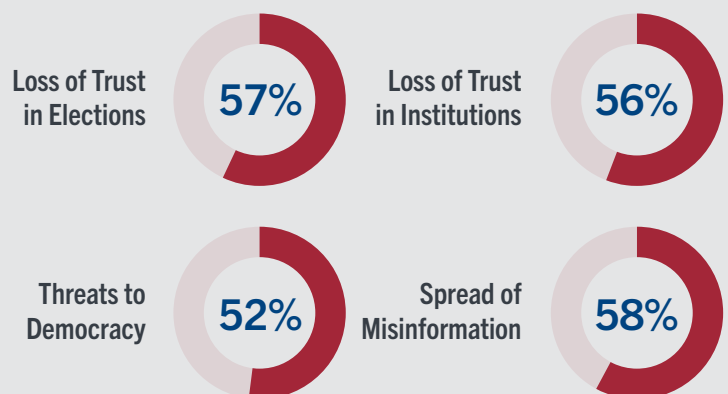


Negative Consequences

Many are wary of the downsides of greater AI adoption, which include:



A majority of Americans believe AI has contributed to eroding trust and spreading misinformation by playing a role in:



Specific Uses: Facial Recognition and Self-Driving Cars

Sixty-two percent of Americans believe facial recognition is a responsible use of AI technology.

Adults are comfortable with employing it for a variety of tasks that include:



71%

Finding missing persons



68%

Finding lost pets



68%

Identifying and monitoring criminals



64%

Identifying fraudulent behavior when making purchases



62%

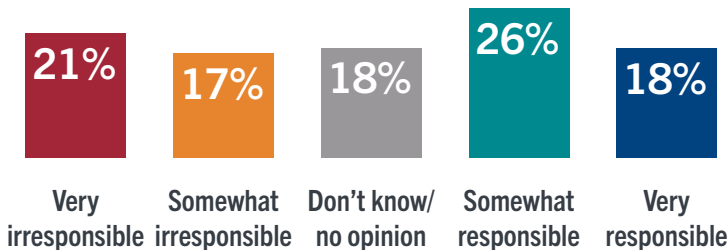
Aiding in police investigations



48%

Monitoring people at rallies and marches

People are less convinced that self-driving cars are a responsible use of AI.



Future Implications

There is a good deal of apprehension about the future of AI.



Half of adults (51%)

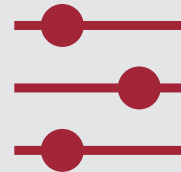
believe it is likely that humans will be unable to control AI.

In addition, majorities also believe it is likely AI will:



69%

Be misused by governments



63%

Control too much of everyday life



52%

Become smarter than humans

Methodology: This poll was conducted on behalf of Stevens Institute of Technology by Morning Consult between September 8-10, 2021 among a sample of 2,200 Adults. The interviews were conducted online, and the data were weighted to approximate a target sample of Adults based on gender, educational attainment, age, race, and region. Results from the full survey have a margin of error of +/- 2%.