

What to Bring to Campus

This list is a helpful reminder of some things to make sure you bring with you to campus and what to make sure you leave at home! Remember to not bring everything you own...your space is now a shared one! Its important too in this ever-changing time to be mindful of what you bring with you...pack the bare minimum, for one season at a time if possible, and change out your items when you leave for Thanksgiving break! There's also reminders to talk with your roommate about who will be bringing some of those bigger items that you will share! Remember - you can always visit one of the nearby stores to get something you missed!

The Sleeping Essentials

Twin XL Sheet Set
Comforter
Pillows
Mattress Pad (Optional)



The Clothing Essentials

Clothes to get you through the fall


- *Remember to pack light!

Hangers

Laundry Basket

Laundry Detergent and Dryer

Sheets



The Seasonal Essentials

- Raincoat/durable Umbrella
- Rainboots
- Scarf, hat, gloves
- Light jacket
- Warm coat



The Cleaning Essentials

- Towel
- Bathrobe (optional)
- Shower Shoes
- Shower Caddy
- Shampoo, Soap/Body Wash



The Wellness Essentials

- Insurance Card
- Emergency Numbers
- Daily medications
- Vitamins
- Pain Reliever
- Band-Aids
- Tissues
- Extra Face Masks
- Hand Sanitizer



Paper Towels
Disinfecting Wipes/Cleaner
Plug-in Air Freshener
Swiffer
Toilet Paper (if you have a private bathroom)

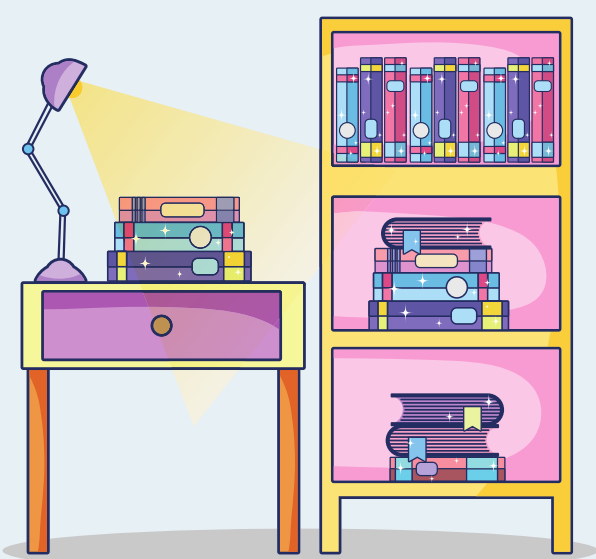
Check with Your Roommate...

Have a conversation with your roommate about renting a micro-fridge, who will be bringing the TV, or the area rug, or the cleaning supplies...whatever items you will be sharing. This is especially important for those large items you can only have one in each room!

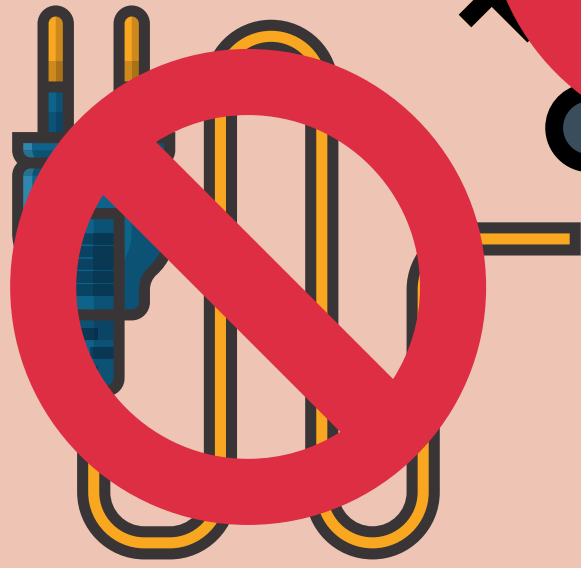


The Study Essentials

- Backpack
- Planner
- Notebooks
- Pens, Pencils, Highlighters
- Calculator
- Post-Its
- Textbooks
- Laptop and charger
- Surge protectors



What to Leave at Home



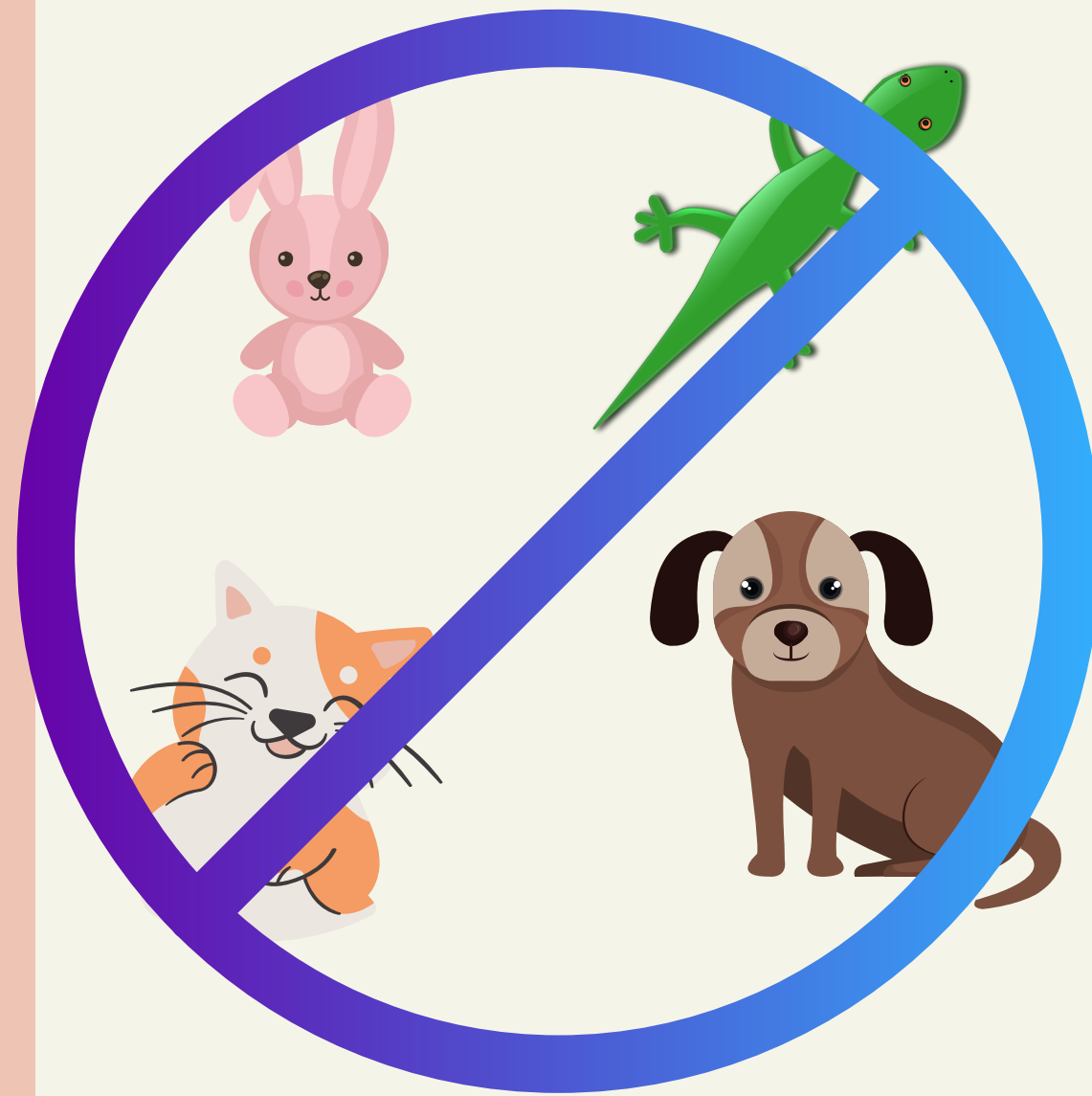
LEAVE YOUR...

Candles

Halogen Lamps

Electric Heaters

Extension Cords (only surge protectors
are approved)



NO CUDDLY CRITTERS...

No pets are allowed except for
fish who live in a 10 gallon tank
or smaller. (They will need to
travel home with you when you
leave for breaks!)



NO OPEN HEATING ELEMENTS

Please leave your

Coffee pots

Toasters

George Foreman Grills

Or any items with an open
heating element



EXTRA FURNITURE IS NOT ALLOWED

Additionally, all Stevens-owned furniture
in your room needs to remain in your
room.

If you have any questions about what is permitted, please email
rds@stevens.edu.