

Stevens Institute of Technology

Media Highlights

March 19, 2025 to May 12, 2025

Between March 19 and May 12, 2025, Stevens received 2,920 earned media mentions. This represents a 72% increase in earned media mentions over this period the previous year (1,700). This figure includes media mentions in the national, regional and local media, including digital, radio, broadcast and print media. Mentions include faculty commentary in top tier and other outlets, student and staff profiles, coverage of published research, institutional updates and other mentions. This coverage is the result of targeted outreach to media, media inquiries seeking expert commentary and organic media coverage of Stevens people and activities. Athletics media coverage is typically not included in this media report.

Highlighted Coverage



The New Yorker article references Stevens Institute of Technology in a historical context about technological skepticism. The article specifically highlights the words of an early president of Stevens Institute of Technology — an "eminent engineer" representing established scientific authority. This positions Stevens as an important institutional player in the history of technological development in America.



Transit systems vulnerable to disinformation

School of Engineering and Science (SES) Associate Professor Jose Ramirez-Marquez discussed how misinformation can affect transit systems and disrupt commutes, costing commuters extra money. It also can cause dangerous disruptions during mass gatherings such as concerts or rallies.



Spring allergies are back. Here's how to check pollen levels and keep from sneezing

School of Humanities, Arts and Social Sciences (HASS) Associate Professor Theresa MacPhail explained why allergies are starting early and why people susceptible to them may need to start taking their medications ahead of the allergy season. She also noted that increased flooding and wetness trigger mold growth, another contributor to allergies.



An epilogue to the New Deal and CCC deep dive with Neil Maher

HASS Associate Professor Lindsey Cormack discussed the government's response to the Great Depression and the legacy of the New Deal, including the government's initial missteps and the eventual successes of programs such as the Civilian Conservation Corps.



AI holds promise in scientific research, but can't substitute for humans, experts say

SES Professor Jennifer Kang-Mieler spoke with the North Dakota Monitor about AI playing an increasingly important role in analyzing data, assisting in diagnostics and making personalized treatment plans while cutting research costs. She noted, however, that because AI models are only as good as the data sets they're trained on, humans must oversee AI's output and make final decisions.



Static analysis proposed to 'rehabilitate' shell programs

SES Assistant Professor Michael Greenberg's new research paper on making shell script languages safer and bug-free — as well as the unique challenges that the effort is facing — is discussed.



How should students evaluate a business school in 2025?

Stevens' Center for Research toward Advancing Financial Technologies (CRAFT) welcomes Prudential to its Industry Advisory Board to advance fintech research with a focus on AI and quantum computing. "CRAFT is committed to building strong partnerships between academia and industry in the fintech space, and Prudential's involvement will amplify this mission — unlocking exciting new opportunities in the financial services and insurance sector," said Steve Yang, CRAFT director.



Predicting glycemic responses using noninvasive data

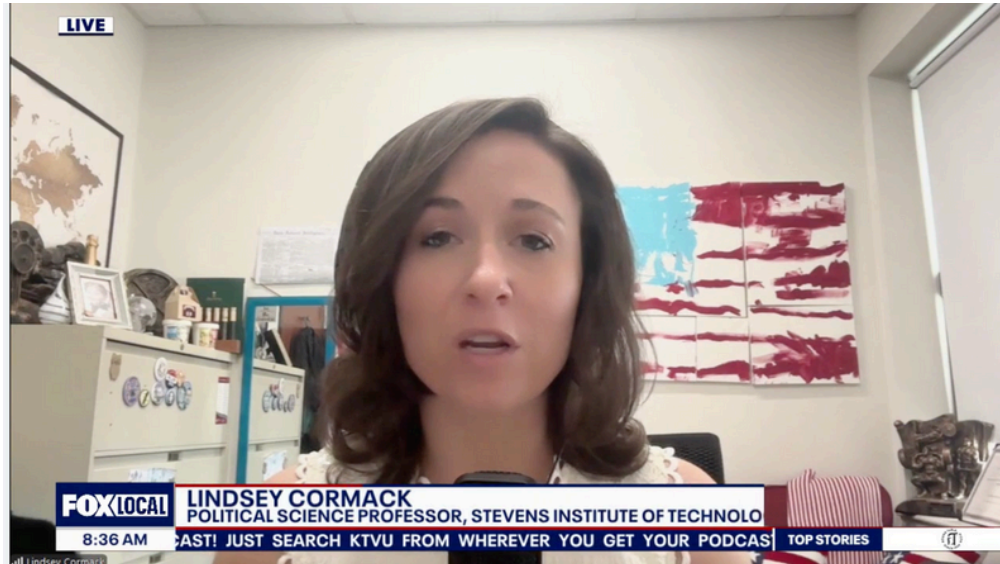
SES Professor Samantha Kleinberg's new study on predicting people's glycemic responses using ChatGPT is featured as a new way to assess how food affects human body. Kleinberg's team showed that this work can be done "without the need for either personalized training data or invasive physiological data."

Highlighted Coverage



Stevens President Nariman Farvardin appeared on the Illumination Podcast, where university leaders share insights on the ever-evolving higher ed landscape, to discuss the future of higher education, speaking about how AI and other digital technologies might reshape classroom experiences for students. He also spoke about the necessity of offering students more a personalized college experience, including the flexibility study subjects and time investment in their courses.

Highlighted Coverage



After publication last fall, HASS Associate Professor Lindsey Cormack's book "How to Raise a Citizen" continues to generate buzz. She appeared on Fox to offer advice on how to talk to children about the current state of politics. Watch the interview [here](#).

Research, Innovation and Entrepreneurship

Technology Networks

Why soft robotics could be the future of stroke rehabilitation
SES Assistant Professor Jacqueline Libby offered expertise on how soft robotics can revolutionize the process of stroke rehabilitation. Lighter and less cumbersome than traditional mechanized support frames, these soft exosuits are also equipped with biosensors that react to patients' neural signals, forming a feedback loop with patients' brain and muscles.

The dangers of 'Jekyll and Hyde Leadership': Why making amends after workplace abuse can hurt more than it helps

Stevens School of Business (SSB) Assistant Professor Haoying Xu co-wrote an op-ed outlining how managers who switch between abusing their employee and making amends do more damage to the employee's morale and dedication than bosses who consistently display bad behavior.





Water scarcity solutions in MENA: challenges, innovations

SES Associate Professor Marouane Temimi discussed the water scarcity issues in the Middle East and North Africa (MENA) region, mentioning urban population growth, climate change, rising global temperatures and water pollution, as well as some shortsighted government policies that prioritize water-intensive agriculture, and conflicts in the region as key drivers. He noted that political borders do not align with hydrological borders — meaning that rivers cross multiple countries, leading to transboundary water disputes — and discussed solutions.



How post-lunch food comas can skew your children's test results

This op-ed from SSB Assistant Professor Justine Hervé expounds on the findings of her research into the "food coma" phenomenon, which significantly impacts cognitive performance. She found that students in her study who took tests within an hour after eating scored lower across various subjects compared to those tested more than an hour after meals, possibly due to increased fatigue that particularly affects performance on challenging questions.



Prudential fosters advancement of fintech research by joining industry board at Stevens

President Nariman Farvardin commented on the recent addition of a new member, Prudential, to Stevens' CRAFT. "This partnership strengthens our academic-industry collaboration in financial technologies, particularly in emerging areas like quantum computing and AI," he said.

Campus and Community



NJ's Innovate100 Leaders to be honored May 13

SES Professor Brendan Englot, Assistant Professor Philip Odonkor and Assistant Professor Antonia Zaferiou were described as the finest innovation leaders in the state of New Jersey and included in the INNOVATE100 list.



ASU students win big at homeland security design challenge

Stevens DASSHing Ducks team participated in a DASSH 2025: Security in an AI World competition, hosted by Arizona State University, placing first and winning a \$10,000 prize.



Jersey Proud: Hoboken college students to design robots to patrol Lincoln Tunnel

Six Stevens students won a \$10,000 grant to design robots to patrol the Lincoln Tunnel for accidents and other emergencies. The robots will move back and forth on the elevated catwalk along the roadway and alert authorities if they note anything awry.



Longtime entrepreneur, innovator and Stevens emeritus trustee to address graduates in Holmdel

Emilio A. Fernandez — entrepreneur, inventor, philanthropist and emeritus trustee — will deliver the keynote address at Stevens' 153rd Commencement ceremony on May 21 at the PNC Bank Arts Center in Holmdel.



New Jersey's life sciences scene continues expanding beyond big pharma

Stevens is mentioned as one of the research institutions where companies can find qualified life sciences job candidates.



Artificial intelligence grows in New Jersey

The Stevens Institute of Artificial Intelligence is recognized as one of the key institutions at the forefront of AI education and research in New Jersey, contributing to the state's growing prominence as an East Coast AI hub.

