

A UNIVERSITY ON THE RISE

BUILDING A WORLD-CLASS CAMPUS • SPRING 2019

Stevens Institute of Technology is making significant investments in state-of-the-art campus facilities, consistent with its strategic efforts to advance as a premier, student-centric, technological research university. New, expanded, and renovated academic and student life spaces will accommodate a growing student body and faculty. This modern campus environment will further strengthen the university's innovation ecosystem. Some recent projects are highlighted.



STUDENT HOUSING AND UNIVERSITY CENTER

An iconic structure consisting of two residential towers atop a three-story university center will transform the Stevens campus into a modern hub for student life during the 2021-22 academic year. The residential towers will accommodate nearly 1,000 students in on-campus housing, while the university center will provide extraordinary spaces for students, faculty, and staff to collaborate, socialize, and relax. New dining venues, a fitness center, and conference spaces will be part of the university center.





ABS ENGINEERING CENTER

The ABS Engineering Center is a teaching and research facility that features flexible-use space designed to promote collaboration across multiple engineering disciplines, from robotics and building materials to maritime craft testing and green technology.



STUDENT WELLNESS CENTER

The Student Wellness Center opened in February 2019 and offers a comprehensive, coordinated, and holistic approach to student wellness at Stevens.



RUESTERHOLZ ADMISSIONS CENTER

Renovated in 2014, this 1923 building welcomes prospective students and families with an updated, contemporary interior and striking skyline views.



LORE-EL CENTER FOR WOMEN'S LEADERSHIP

The renovation of the Lore-El Center has created a vibrant living and learning environment that promotes the empowerment of Stevens women through programs, events, mentorship, and a shared residential experience; it is an important element of a university-wide initiative to recruit and support women pursuing technology careers.

HANLON FINANCIAL SYSTEMS CENTER

State-of-the-art tools in the Hanlon Financial Systems Lab support faculty and student inquiry into risk management, innovation adoption, asset valuation, regulation, technology strategy, algorithmic trading, cognitive computing, and cybersecurity. Bloomberg terminals allow students to earn Bloomberg certification.



STATE-OF-THE-ART ACADEMIC SPACE

Opening in summer 2019 and the planned home to Stevens' rapidly growing Department of Computer Science, the new 90,000-square-foot academic building will add 11 new classrooms, 45 faculty offices, and 13 teaching and research labs for computer science, artificial intelligence, cybersecurity, and the university's thriving programs in healthcare innovation. Targeting LEED Gold®, this building will include technology-enhanced smart classrooms equipped with advanced learning technologies, specialized software, audience response technology, and networking and audiovisual capabilities.



CITY VIEW PLAZA AND BABBIO GARAGE

The newly completed Babbio Garage adds 266 parking spaces, 60 bicycle parking spaces, and electric vehicle charging stations. The pedestrian rooftop plaza, which includes a green roof and a staircase leading down to the riverfront pedestrian walkway, features spectacular views of the New York City skyline.

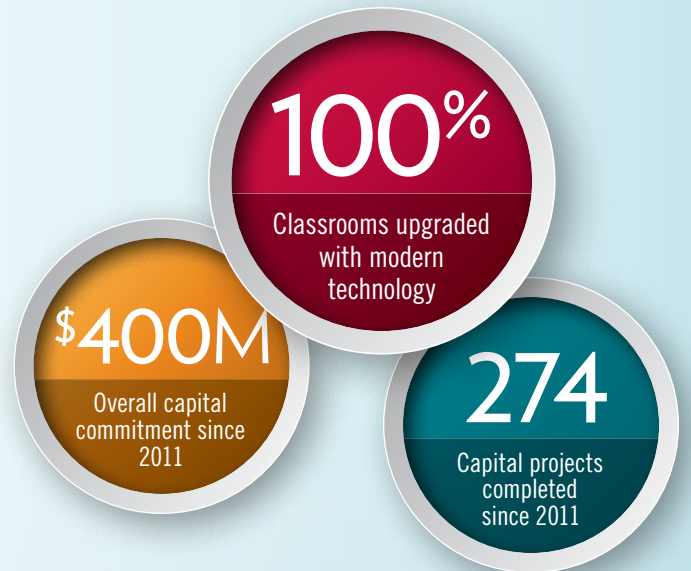


SCHAEFER ATHLETICS CENTER LOBBY

The renovated lobby provides bright relaxation and meeting space for the health-conscious student body and welcomes visitors to cheer on Stevens' nationally ranked Division III athletics teams.

“The physical transformation of the Stevens campus is a powerful symbol of the university’s overall transformation. Great universities have exemplary spaces for students and faculty, and Stevens is making great strides in creating a campus befitting a premier technological university.”

— *Nariman Farvardin, President*



STEVENS
INSTITUTE of TECHNOLOGY
THE INNOVATION UNIVERSITY®

1 Castle Point Terrace
Hoboken, NJ 07030
stevens.edu