

What to Bring to Campus

This list is a helpful reminder of some things to make sure you bring with you to campus and what to make sure you leave at home! Remember to not bring everything you own...your space is now a shared one! Its important too in this ever-changing time to be mindful of what you bring with you...pack the bare minimum, for one season at a time if possible, and change out your items when you leave for Thanksgiving break! There's also reminders to talk with your roommate about who will be bringing some of those bigger items that you will share! Remember - you can always visit one of the nearby stores to get something you missed!

The Sleeping Essentials

Twin XL Sheet Set
Comforter
Pillows
Mattress Pad (Optional)



The Clothing Essentials

Clothes to get you through the fall
*Remember to pack light!
Hangers
Laundry Basket
Laundry Detergent Pods and
Dryer Sheets



The Seasonal Essentials

Raincoat/durable Umbrella
Rainboots
Scarf, hat, gloves
Light jacket
Warm coat



The Cleaning Essentials

Towel
Bathrobe (optional)
Shower Shoes
Shower Caddy
Shampoo, Soap/Body Wash



The Wellness Essentials

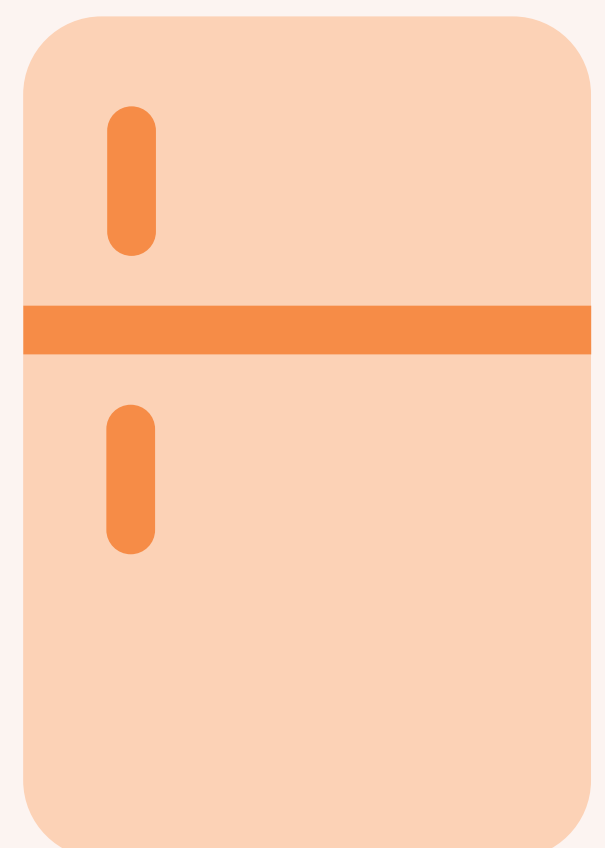
Insurance Card
Emergency Numbers
Daily medications
Vitamins
Pain Reliever
Band-Aids
Tissues
Extra Face Masks
Hand Sanitizer



No Need To Rent or Bring a Micro-Fridge

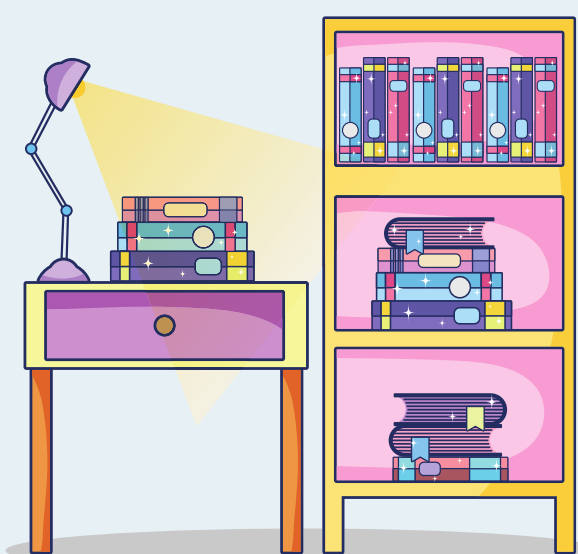
Upon your arrival on campus, a micro-fridge will already be set up in your room. This year, micro-fridges will be provided in spaces across campus that typically do not have a fridge in the space to begin with.

Please make sure to leave the micro-fridge at home.

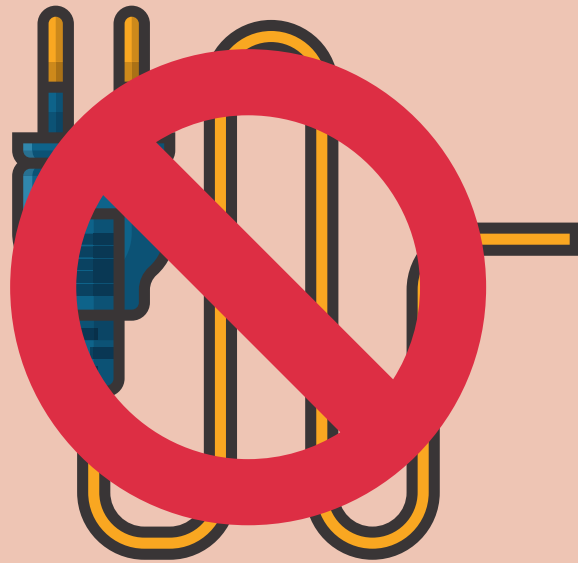


The Study Essentials

Backpack
Planner
Notebooks
Pens, Pencils, Highlighters
Calculator
Post-Its
Textbooks
Laptop and charger
Surge protectors



What to Leave at Home



LEAVE YOUR...

Candles

Halogen Lamps

Electric Heaters

Extension Cords (only surge protectors are approved)



NO CUDDLY CRITTERS...

No pets are allowed except for fish who live in a 10 gallon tank or smaller. (They will need to travel home with you when you leave for breaks!)



NO OPEN HEATING ELEMENTS

Please leave your

Coffee pots

Toasters

George Foreman Grills

Or any items with an open heating element



EXTRA FURNITURE IS NOT ALLOWED

Additionally, all Stevens-owned furniture in your room needs to remain in your room.

If you have any questions about what is permitted, please email rds@stevens.edu.