



iSTEM NETWORK

Join the iSTEM Network

A Network of Universities Expanding
the Reach of STEM Education

The World Needs Different Thinkers

In an era of unprecedented global challenges — from cybersecurity threats to rapid technological disruption to geopolitical complexities — our world desperately needs more creative problem-solvers and innovators. Yet our traditional educational systems often overlook exceptional minds who think differently. Some of history's most transformative innovators, from Einstein to Gates, Bezos to Jobs, followed unconventional paths to success.

The iSTEM Vision

iSTEM identifies, nurtures and propels exceptionally talented students whose innovative thinking and problem-solving abilities may not be reflected in traditional academic metrics.

Stevens Institute of Technology, as the founding partner of the iSTEM Network, launched this groundbreaking program in 2019. After demonstrating extraordinary success in helping unconventional thinkers thrive and create impact, Stevens and philanthropist Emilio A. Fernandez welcome the interest of other universities that are intrigued by the iSTEM vision and wish to explore establishing a program that builds on their creative ideas and distinctive characteristics.

With an expanding network of iSTEM programs, the mix of innovative approaches to teaching and learning and ideas for collaboration across partner universities will enhance the impact of the Network in unlocking a vast reservoir of underutilized talent and accelerating solutions to society's most pressing challenges.

Why Partner With iSTEM?

Tap Overlooked Talent

Identify and nurture students with remarkable abilities who might otherwise be overlooked by traditional admissions criteria.

Improve Retention

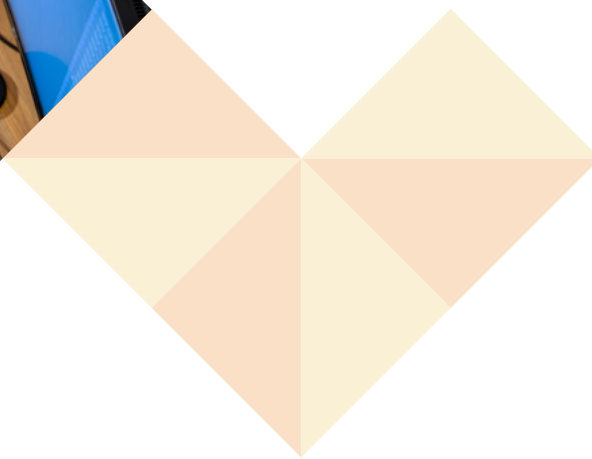
From a total of 69 students since inception, iSTEM at Stevens has achieved a 91% retention rate — significantly higher than the national university average. iSTEM enrollment at Stevens will grow to 80 students in the next few years.

Drive Innovation

Foster an entrepreneurial ecosystem that has already generated 20+ student-led companies — nearly one new venture for every three students admitted to the program.

Strengthen Your Institution

Join a select network of forward-thinking universities reshaping the future of STEM education.





Bright futures: Stevens iSTEM students present their innovative projects at Prudential Financial's Data, Service and Technology Town Hall

What You Receive as a Network Partner

- **Complete Program Blueprint:** Curriculum, admission framework and implementation guide
- **Training and Support:** Expert guidance for faculty and staff from the iSTEM team at Stevens
- **Resource Sharing:** Access to program materials, best practices and collaborative opportunities
- **Startup Funding:** Initial grants to establish your campus program
- **Ongoing Assistance:** Regular check-ins, site visits and problem-solving support enterprises



iSTEM is an awesome community that makes you want to make a difference in the world."

— Diana Rosado, iSTEM graduate

The iSTEM Model

The iSTEM program provides a comprehensive, four-year journey that transforms talented students into entrepreneurs and innovators:

1. **Program Kickoff:** Students develop their passions and identify problems worth solving
2. **Invention:** Students acquire technical skills and build prototypes
3. **Product Development:** Students build professional products and learn business skills
4. **Incorporation and Growth:** Students launch ventures and prepare for post-graduation success as the drivers of their own companies or as transforming innovators in existing enterprises



A Proven Success Story

Since 2019, iSTEM at Stevens has:

- Created 20+ student-led portfolio companies
- Maintained a 91% student retention rate
- Averaged 3+ new business incorporations per year
- Helped students raise over \$5M in venture capital



iSTEM has transformed how we identify and nurture talent. We're finding brilliant minds who think differently and are helping them change the world."

— Nariman Farvardin, President,
Stevens Institute of Technology



The iSTEM Network expansion timeline:

- | | |
|-------------------|--|
| 2025-2026: | On-boarding of second partner institution (George Washington University) |
| 2026-2028: | Growth to include an expected two or three additional partner institutions |
| 2029-2032: | Completion of the initial network constellation with a number of additional institutions |

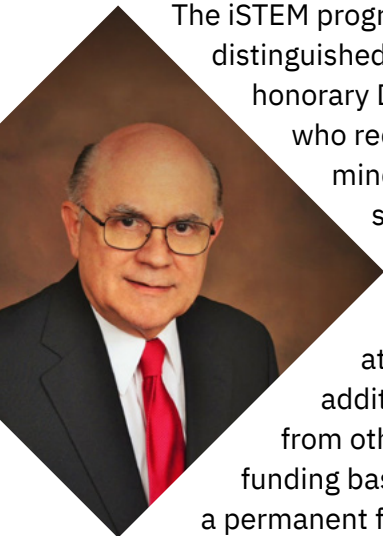
Throughout this process, Stevens will provide ongoing guidance, assessment and knowledge sharing across all network partners.

The Emilio A. Fernandez Vision

The iSTEM program was conceived and established by distinguished engineer and Stevens Emeritus Trustee and honorary Doctor of Engineering Emilio A. Fernandez, who recognized that some of the most creative minds in history had unconventional pathways to success.

Mr. Fernandez provided an initial grant in 2019 to create iSTEM as a start-up program at Stevens. In 2024, he committed substantial additional support that, combined with funding from other donors and Stevens itself, established a funding base of nearly \$20 million to make the program a permanent feature of the university's educational profile.

Mr. Fernandez and Stevens are now in a position to encourage and assist other institutions build on their distinctive characteristics and strengths to reach highly talented, unconventional learners who will be problem-solvers for the benefit of society.



Contact the iSTEM Network

Brodie Remington
iSTEM Network Advisor
brodieremington@outlook.com
301-906-8417

STEVENS
INSTITUTE OF TECHNOLOGY™

1 Castle Point Terrace
Hoboken, NJ 07030
stevens.edu/iSTEM

