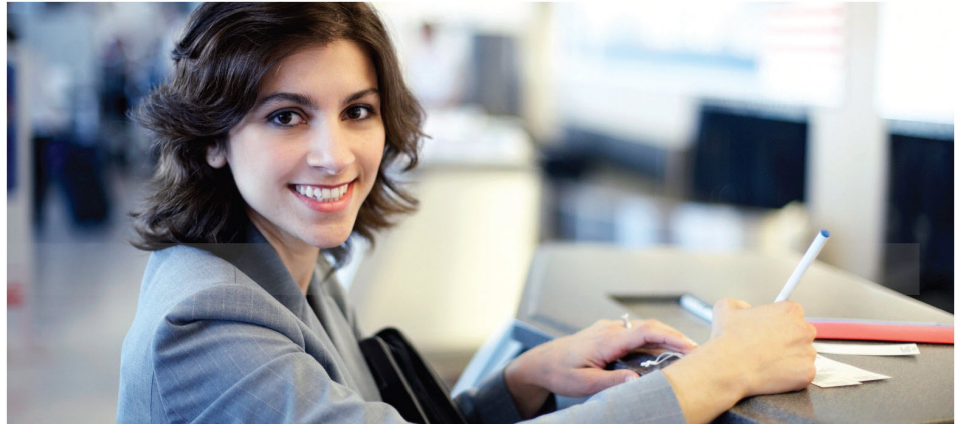


Identity Theft Protection

From detection to resolution, you and your family are covered with Identity Theft Protection¹

CHUBB®



Relax, you're covered with Identity Theft Protection.

Life is stressful enough as it is. The last thing you should have to worry about is becoming the victim of an identity thief. With Identity Theft Protection, you and your family are protected from the often devastating consequences of identity theft. Whether you're at home or across the country, you're only one toll-free call away from Identity Theft Protection

professionals, who are here to help you protect your personal assets and restore your peace of mind - and your spouse is fully covered too.

You can even get expert advice for your children if you believe they have been affected by identity theft.²

If you believe you or a family member may be a victim of fraud, call 1.866.299.7277 (toll-free), 24/7.

Please detach your personal Identity Theft Protection card below and carry it with you at all times. Also, keep a copy of the phone number in a safe place in case you lose this card.

CHUBB®

Identity Theft Protection Services

Group No: 99956890
Policy No: 6477-70-04
ITS

Identity Theft Protection

Worldwide & Toll-Free 24/7

For Round-the-Clock Fraud Support, call

1.866.299.7277
toll free, 24/7

Please refer to local country dialing instructions and make sure to use a telephone that has international access.

Identity Theft Protection

Your protection benefits are yours for as long as you are insured under the Chubb Personal Protection policy

Expert advice and 24/7 assistance are just a phone call away

If you've ever had the misfortune of losing a credit or debit card, then you know how stressful and costly it can be. Plus, with the current threat of fraud and identity thieves looking to

access your confidential information, a stressful situation just became that much worse. And none of this accounts for the time you'll spend away from all the things you'd rather be doing.

Identity Theft Protection helps you defend your identity and recover any lost or stolen cards in the unlikely event you're a victim. With your first phone call to 1.866.299.7277:

- You'll be assigned a dedicated caseworker who will work with you every step of the way, helping you to restore your identity should you become the victim of fraud.
- You'll also receive a Customized Identity Fraud Resolution Kit that provides you with valuable information, including forms you'll need to alert credit bureaus and authorities.
- And we'll help you place Fraud Alerts at the appropriate credit bureaus, establish Police Reports, and set up Credit Monitoring³ for you, helping you to mitigate any residual damage to your identity.

Expert assistance and easy resolution

Lost or stolen financial documents are a leading cause of identity theft. Now you can rest easy knowing that Identity Theft Protection helps provide you and your family assistance with

contacting card issuers to cancel and replace your lost or stolen cards.⁴ Our knowledgeable, professional caseworkers will guide you every step of the way.

¹ Actual services provided through CS ID. CS ID is an independent service provider. Chubb refers to the member insurers of the Chubb Group of Insurance Companies providing insurance.

² If the suspected identity theft is affecting your dependent child, you or your spouse can call on the child's behalf to receive personalized assistance in reporting the crime.

³ Daily monitoring will notify members of any new inquiries, certain derogatory information, accounts, public records, or change of address that have been added to their credit reports as reported by any of the three major credit reporting agencies. If no information has been added or changed, then the member will receive a quarterly notification stating that no information has changed within their credit file.

⁴ Some financial institutions may require you to call them directly and will not accept notification from third parties in which case we will contact you so that you can call your financial institution directly.

Chubb. Insured.™